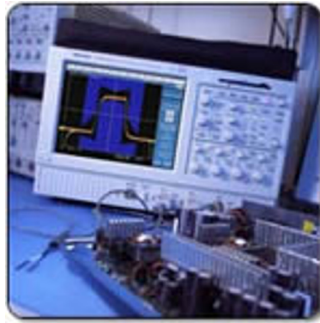


Getting Started Guide

Using MATLAB with Tektronix Oscilloscopes over a GPIB Connection



This guide shows you how verify within 15 minutes that you can use MATLAB® with your Tektronix® oscilloscope. MATLAB enables Tektronix oscilloscope users to acquire and analyze data, graphically visualize data, make custom measurements, generate reports, and develop automated applications.

If you have any questions or problems completing the steps in this guide, [contact MathWorks Technical Support](#). MathWorks can also provide Getting Started Guides for using your instrument with a LAN (TCP/IP), Serial (RS-232), or USB connection.

System Requirements for Completing This Guide

1. A Tektronix oscilloscope with a GPIB interface supporting remote instrument communication.
2. MATLAB and Instrument Control Toolbox™ installed on a computer.
3. VISA software installed on the computer. VISA is often available as a free or low-cost download from instrument manufacturers such as Agilent and Tektronix.
4. The appropriate [MATLAB instrument driver](#) for your instrument.

Contact Sales at 508-647-7000 if you would like a trial of MATLAB and Instrument Control Toolbox, need assistance finding a MATLAB instrument driver for your instrument, or have any questions about the system requirements.

Prepare Your System

Step 1: Start Test & Measurement Tool

Start MATLAB and issue the following command to launch the Test & Measurement Tool:

```
tmtool
```

The Test & Measurement Tool (Figure 1) is the user interface for configuring and controlling instruments in MATLAB.

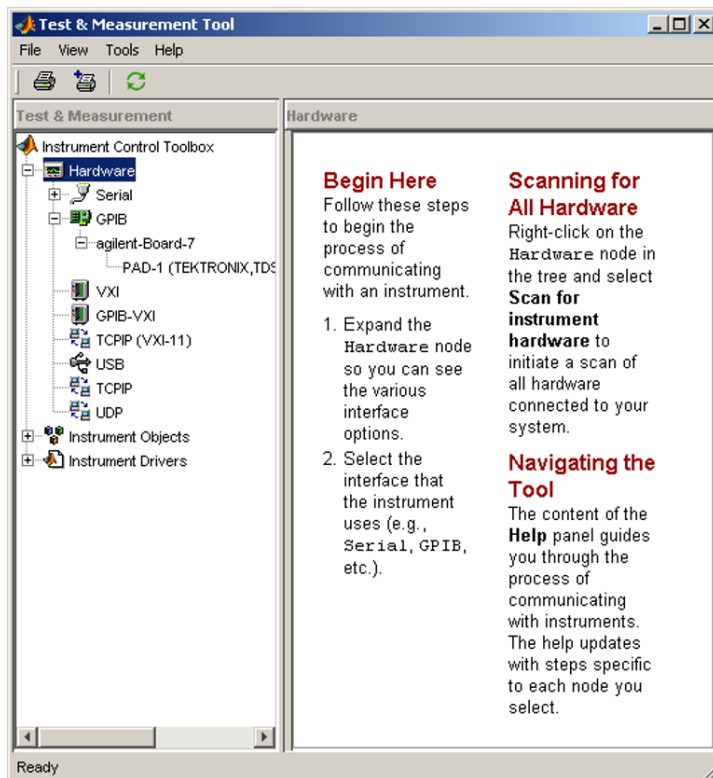


Figure 1. The Test & Measurement Tool from Instrument Control Toolbox.

Step 2: Connect your instrument

Connect your instrument to your computer via a GPIB interface. *See supported interfaces.*

On your Tektronix oscilloscope, select **Utilities > GPIB Configuration**, and ensure that under the **GPIB Configuration** panel the Talk/Listen button is selected.

In the Test & Measurement Tool, right-click the Hardware node and choose **Scan for instrument hardware**. Your instrument will be listed under the **GPIB** node. As you can see from Figure 1, there is a Tektronix scope (primary address 1) connected via an Agilent GPIB adapter (board index 7).

Step 3: Locate an instrument driver

MATLAB with Instrument Control Toolbox supports instrument drivers, which allow you to communicate with your device without knowing low-level instrument commands. To see if your instrument driver is already installed, right-click the **Instrument Drivers** node and select **Scan for Instrument Drivers**. Under the **Instrument Drivers** node, look for a driver that matches your device. If you do not have a matching driver installed, *more are available*. If you are unable to find a matching driver, a driver for a similar device may work with little or no modification.

Downloaded drivers must be placed in a directory on the MATLAB path such as `<matlabroot>\work`. Right-click **Instrument Drivers** and choose **Scan for Instrument Drivers** to refresh the current list of drivers.

Connect to the Instrument

Step 4: Create the interface object

Navigate to the **Interface Object** node under the **Instrument Objects** node. Click **New Object** in the lower right. The resulting dialog box is shown in Figure 2. Configure this to match your GPIB connection to the instrument (from Step 2) and click **OK**.

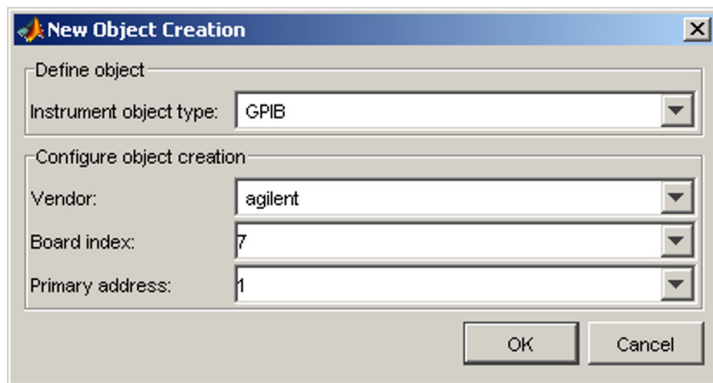


Figure 2. Interface creation dialog box.

Step 5: Create the device object

Under the **Instrument Drivers** node, right-click the instrument driver for your device and select **Create Device Object Using Driver** as in Figure 3. In this example, the instrument is a Tektronix TDS5104B. In the resulting dialog box, select the interface object you created in Step 4. Click **OK** to complete the creation of the device object.

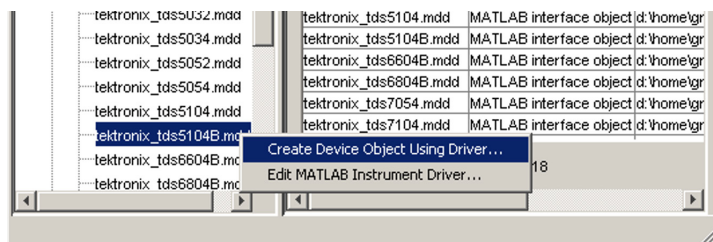


Figure 3. Creating an instrument object from a driver.

Step 6: Connect to the device object

Select the newly created instrument object, which in this example is labeled `scope-tektronix_tds5104B`, under the **Device Objects** node. Click **Connect** in the upper right corner, and you are ready to start interacting with your device.

Interact with the Instrument

Step 7: Query a property

Select the instrument object, click the **Properties** tab, navigate to the **Timebase** property in the **Acquisition** group, and click **Get** as in Figure 4. The results appear in the **Response** pane on the right.

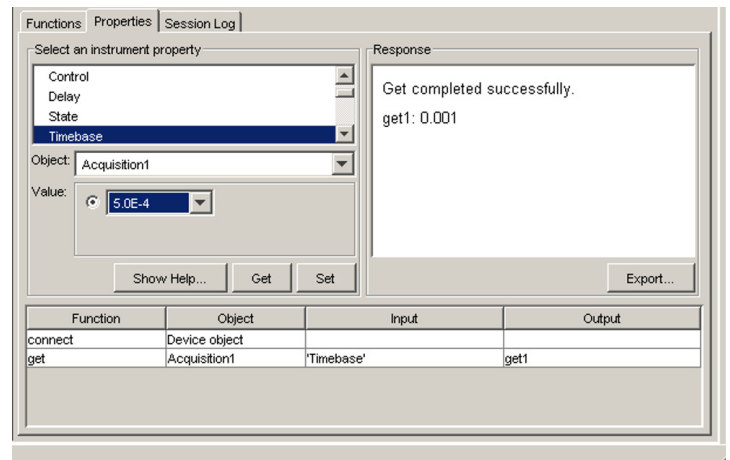


Figure 4. The result of getting the **Timebase** property.

Step 8: Configure a property

Navigate to the **Timebase** property, choose a value for the property, and click **Set**. The **Response** pane indicates if the set succeeded or displays an error message indicating the reason if it failed.

Step 9: Invoke a function

View the instrument's functions by choosing the **Functions** tab. To call the `readwaveform` function, first scroll to `readwaveform` under the **Waveform** group in the function list. Then enter input argument `'channel1'` (include the single quotes) to read the first channel. Next enter output arguments `Y, X, YUNIT, XUNIT, HEADER` as a comma-separated list. (Note: The `HEADER` argument may not be needed.) Finally, click **Execute** to read the waveform. The results appear in Figure 5.

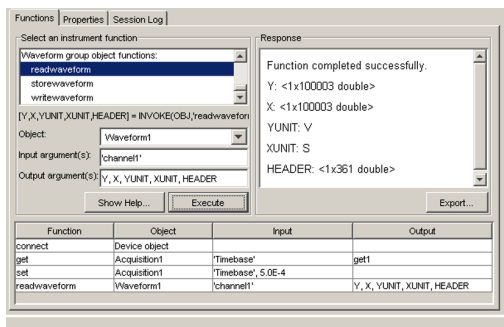


Figure 5. Invoking `readwaveform` of an instrument object.

Step 10: Visualize results

From the **File** menu, select **Export > Instrument Responses**. To plot the waveform (variable `Y`) from the resulting dialog box (Figure 6), check only the box to the left of variable name `Y` and uncheck all others.

In the **Data Destination** list, choose **MATLAB Figure Window** and click **Export**. This will create a MATLAB Figure window displaying the waveform you captured.

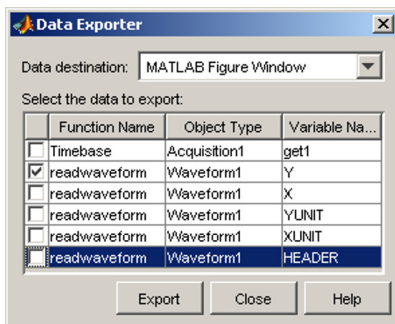


Figure 6. Data export dialog box.

Step 11: Analyze results

You may further analyze your data by exporting it to the MATLAB workspace. From the **Data Exporter** (Figure 6), choose **MATLAB Workspace** as the data destination, then click **Export**. Note: Once your values and waveforms are in the MATLAB workspace, you may use them with MATLAB functions or scripts including ones you create (not shown here).

Step 12: Reuse your session

The Test & Measurement Tool automatically generates MATLAB code for all of your interactions with your instrument. Select the **Session Log** tab of your instrument object to view the MATLAB code (Figure 7). Furthermore, using the **Save Session** button, you may export a code file that you can use to repeat your steps or develop a larger application.

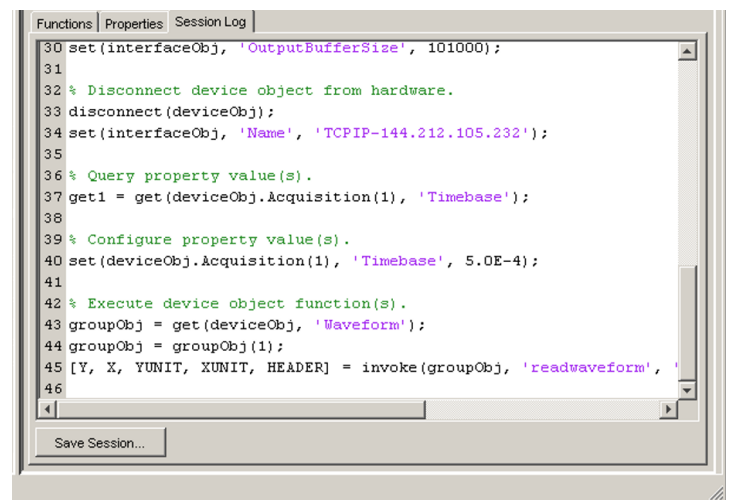


Figure 7. Viewing the code from your session.

If you have successfully completed all these steps, you have verified that you can use MATLAB and Instrument Control Toolbox with your instrument.